

2009 CALIFORNIA ENGLISH WALNUT CROP

CY 2009 Edition 5.

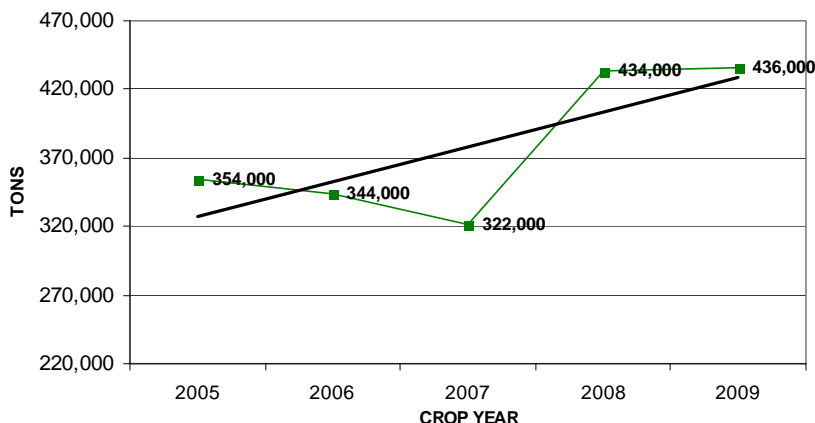
CROP DEVELOPMENT REPORT

January 27, 2010

To: All Customers and Forward Sales Staff

The California Walnut Board has announced the **2009 ORCHARD RUN PRODUCTION, RECEIVED BY HANDLERS as of December 31, 2009 is 436,013 TONS.**

California Walnut Crop Size
In-Shell Basis



In addition to the crop volume received, walnut processors are required under the terms of the Federal Marking Order to report inventories on hand as of December 31st of each year. The table below indicates historical volumes reported for Shelled Walnuts as report in 1,000 pounds.

DECEMBER 31	CERTIFIED	UNCERTIFIED	TOTAL INVENTORY
2004	23,578	120,861	144,439
2005	25,678	132,150	157,828
2006	28,709	125,541	154,250
2007	25,923	105,401	131,324
2008	44,092	184,498	228,590
2009	31,916	154,982	186,898



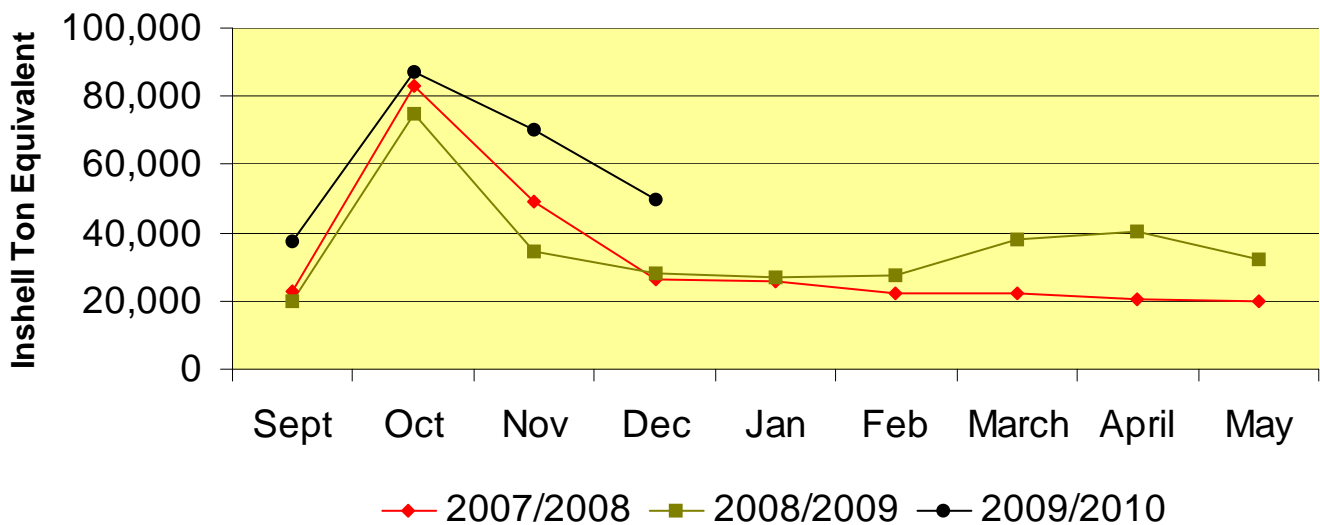
CRAIN WALNUT SHELLING, INC.
10695 DECKER AVE.
LOS MOLINOS, CA 96055
Phone: 530-529-1585
Fax: 530-529-1458
www.crainwalnut.com

2009 CALIFORNIA ENGLISH WALNUT CROP

CY 2009 Edition 5. Page 2

Shipments have continued at record pace through December for both kernel and in-shell sales. The chart below indicates sales by month for recent years, on an in-shell ton equivalent. Demand remains strong, which we anticipate will produce above average shipments for the remainder of the sales year.

CALIFORNIA WALNUT SHIPMENTS BY MONTH



We will continue to keep you apprised of market information as it become available. Please let us know if you have any questions.

Vicki Lopera
Crain Walnut Shelling, Inc.